

Alaska Department of Fish and Game

Habitat Section
Southeast Region



106-22-10080 Tributary 1

ADDITION

Water body name:

Survey date: 8/27/2025

Quad: Petersburg A-2

Species & Lifestage:

Upper Reach Latitude: 56.165934 **Longitude:** -132.569851

Survey crew: NJ, DK

Lower Reach Latitude: 56.164390 **Longitude:** -132.573209

Findings: We surveyed this uncataloged stream up to an anadromous fish barrier using a backpack electrofisher and GPS and captured juvenile coho salmon, Dolly Varden, rainbow trout and visually identified adult pink salmon both schooled up and spawning. The barrier is a narrow 6 ft bedrock cascade with a 1 ft deep jump pool at its base, which constitutes a permanent rock barrier. Adult pink salmon were seen in a pool just downstream. Only resident fish were caught above the bedrock cascade. The stream is highly incised both upstream and downstream of the barrier but still provides fish spawning and rearing habitat (Table 1; Figures 1–3).

Recommendations: Add this uncataloged stream to the anadromous waters catalog up to waypoint 1041 for rearing coho salmon and spawning pink salmon, and add barrier point at waypoint 1041 (Figure 4).

Nomination: Pending

Table 1.–106-22-10080 Tributary 1 survey data.

Waypoint	Latitude	Longitude	Notes	Stream Width ft	Stream Substrate	Habitat Features	Gradient %	Sample Effort	Sample Results
1040	56.166466	-132.569244	Stream channel incised approximately 3 to 5 feet. Combination of large and small gravels, wood debris, and pools. Just downstream of waypoint is a rock step fall approximately 2 to 3 feet in height and potentially blocks juvenile fish from coming upstream. Bedrock incision continues downstream for at least 100 feet.	8-10	Large Gravel Small Gravel	Cut Banks	2-4	EF	3 DV
1041	56.165852	-132.569952	Approximately 10 adult pinks found just below barrier in a pool. 3 adults pinks at barrier pool. Channel incision becomes approximately 30 feet. At junction of where tributary joins this main tributary. Fish barrier present as bedrock cascade. No alternative route for fish to pass up. Cascade is a narrow shoot of bedrock approximately 6 feet high and 1 ft jump pool. Continuing downstream to see if we can find adults or juveniles.		Cobble	Incised Channel	2-4		10 P 2 CO 1 RT



Figure 1.—Juvenile coho salmon caught at waypoint 1041.



Figure 2.—Bedrock falls barrier at waypoint 1041.



Figure 3.—Channel with adult pink salmon present at waypoint 1041.

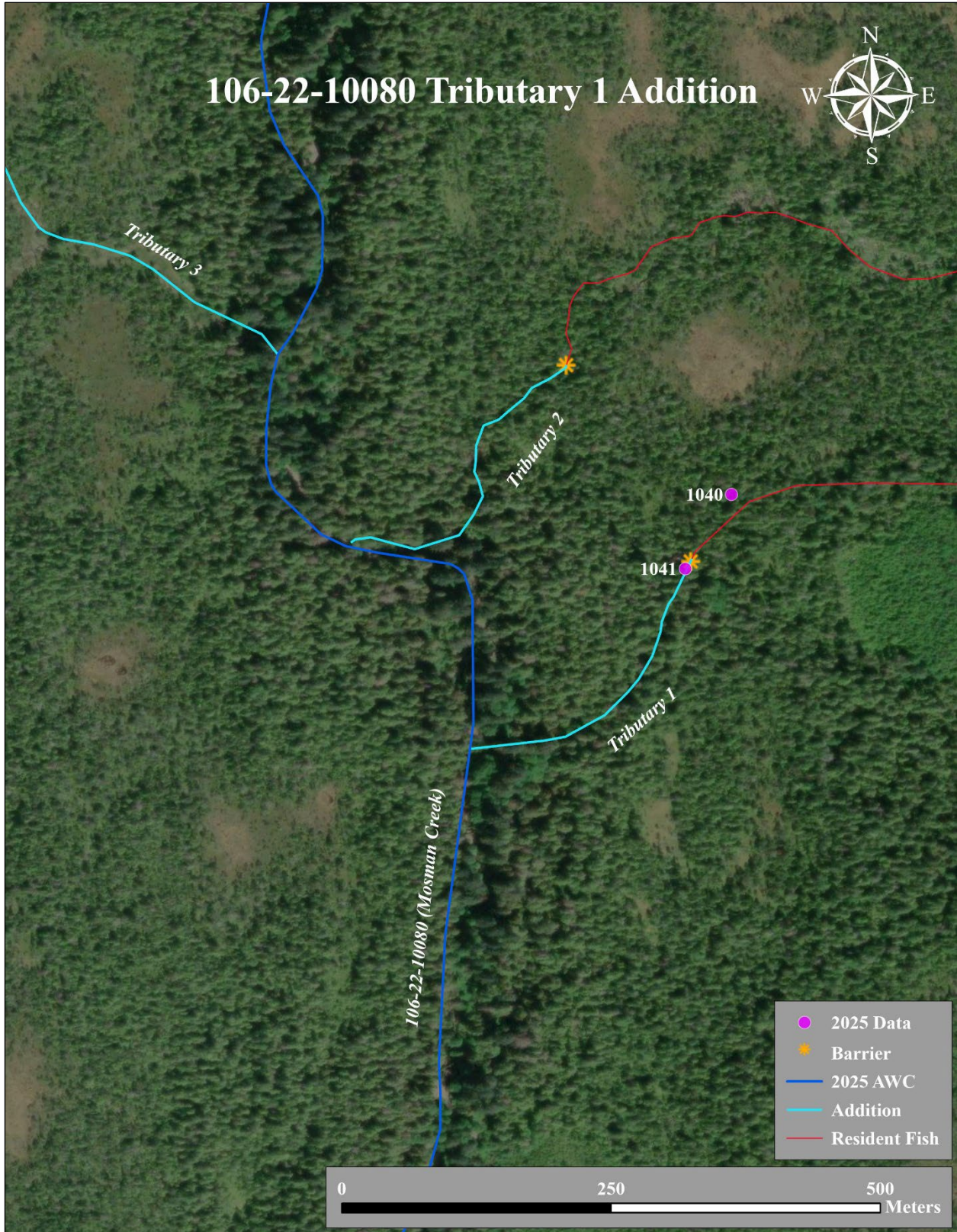


Figure 4.—106-22-10080 Tributary 1 Addition map.